

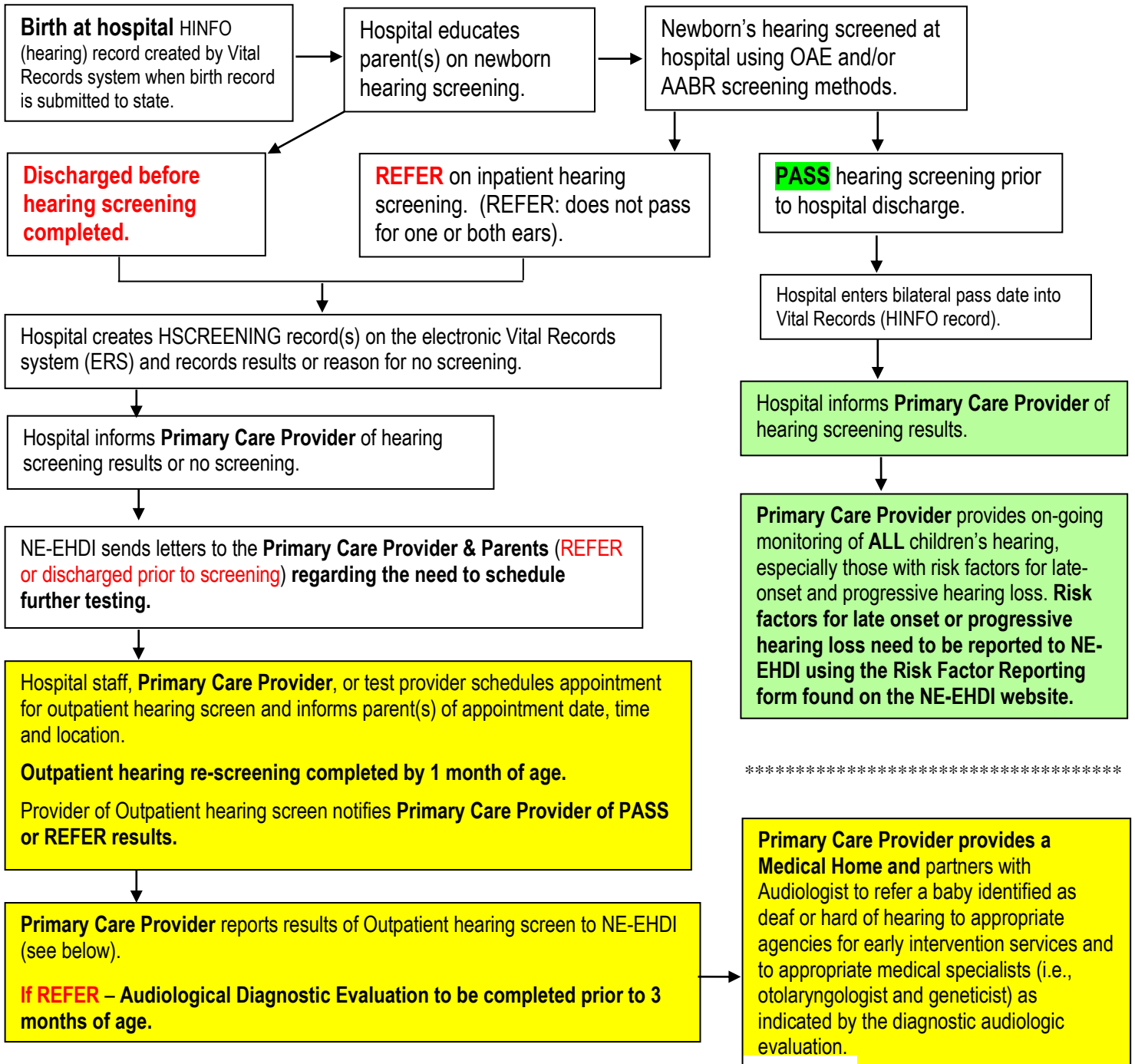
Early Hearing Detection and Intervention (NE-EHDI)

Nebraska Newborn Hearing Screening Algorithm Guidelines

For Pediatric Primary Care and Medical Home Providers

Aligns with the AAP Guidelines

https://www.aap.org/en-us/advocacy-and-policy/aap-health-initiatives/PEHDIC/Documents/Algorithm1_2010.pdf



More information can be found at <http://dhhs.ne.gov/Pages/EHDI-Primary-Physician.aspx>

Nebraska Early Hearing Detection and Intervention
Nebraska Dept. of Health and Human Services
P.O. Box 95026, 301 Centennial Mall South
Lincoln, NE 68509-5026

For questions or concerns, please call:
MeLissa Butler
Phone: 402-471-3579 FAX 402-742-2395